



Orologio marca Festina in oro modello donna con bracciale in pelle nera. Matr. 45495



Orologio Philippe Charriol automatico mod. donna



Orologio GUCCI in acciaio con bracciale in pelle nera. Matr. 10635251



Orologio Baume & Mercier acciaio e oro quadrante bianco mod. donna



Orologio Federique Constant in acciaio con cinturino in pelle nero Matr. FC-345X585/6 1594613



Rolex Submariner in acciaio con ghiera nera (Replica)



Rolex Submariner in acciaio con ghiera nera Ref. 16610 Matr. T954479



Rolex Submariner acciaio con ghiera nera Ref. 16610 Matr. X486035



**Rolex GMT Master ghiera rossa/blu quadrante nero bracciale jubilee Ref. 1675 Matr. 5172705**



**Orologio Breitling con bracciale in pelle Ref. 6915 Navitimer**



**Orologio Lancaster Matr. 0204B**



**Rolex Date Just in acciaio Ref. 16200 Matr. W375004**



**Rolex Date Just in acciaio con bracciale Jubilee quadrante blu con brillanti Ref. 16234 Matr. X141849**



**Rolex GMT Master II in acciaio ghiera rossa/nera (replica)**



Rolex GMT Master II privo di bracciale (Replica)



**Rolex Air King in acciaio Ref. 5500 Matr. R246253**



**Rolex Day Just in acciaio quadrante blu con brillanti Ref. 116234 Matr. M722253**



**Rolex Submariner in acciaio con ghiera nera Ref. 16610T Matr. V622391**



**Rolex Daytona in oro giallo con quadrante nero Ref. 116528 Matr. F764785**



**Rolex Day Date in oro rosa con quadrante nero Ref. 218235 Matr. V341913**



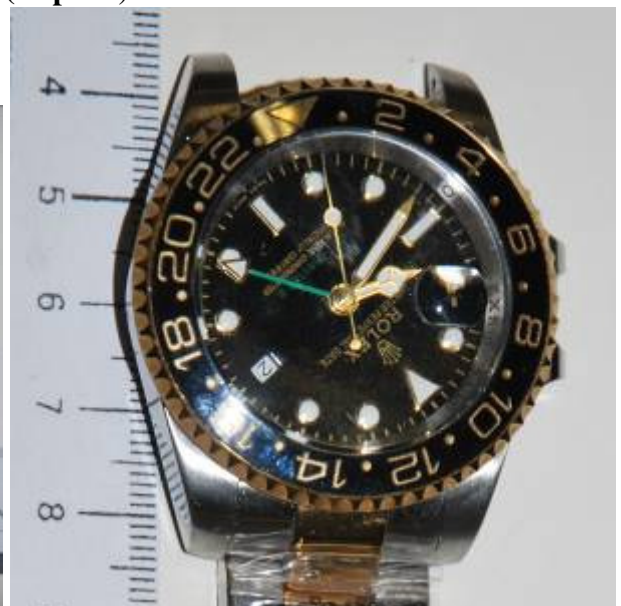
**Rolex Yacht-master in acciaio con bracciale rotto (Replica)**



**Rolex Submariner in acciaio con ghiera nera privo di parte del bracciale (Replica)**



**Rolex in metallo giallo ghiera nera privo di bracciale (Replica)**



**Rolex GMT Master II in acciaio e metallo giallo (replica)**





Referenza: 116519 Matr. P860308





Matr. 118235F



Matr. X693229



Matr.Z140846





Matr. 116718



Matr. 116523





Matr. 6514991



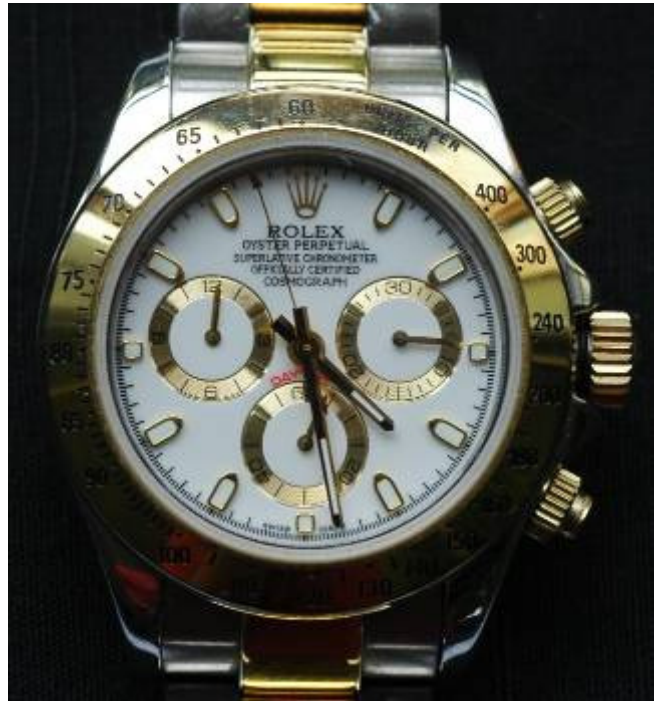
Matr. 882668CE 2740



Senza matricola



**Matr. F520117 (replica )**



**Matr. F520117(replica)**



Matr. Y698295



Matr. E268604



Matricola CC772121



**Matr. 25276CD 2353**

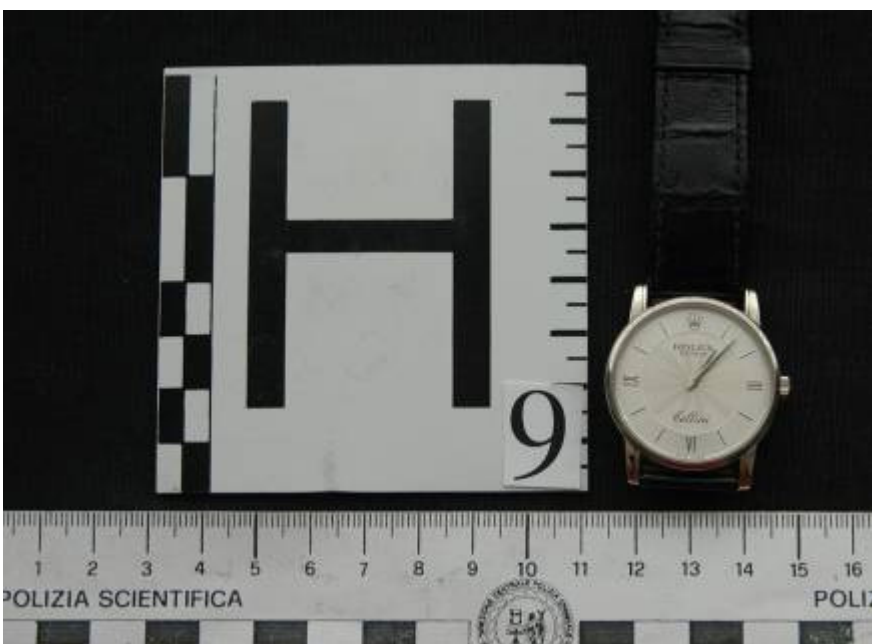


**Matr. 2016148 - A44362**

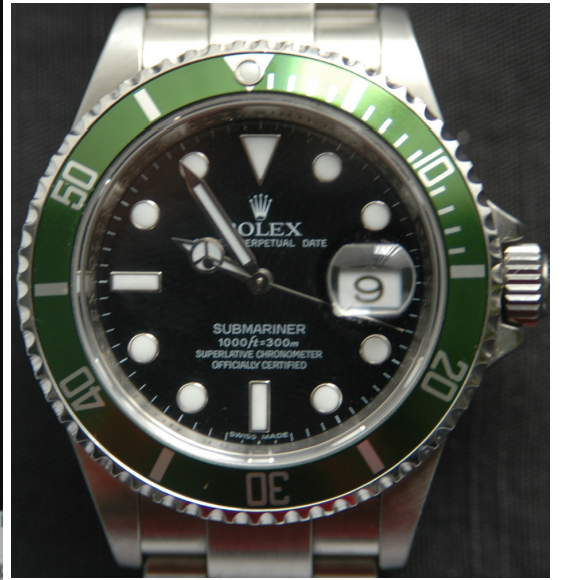




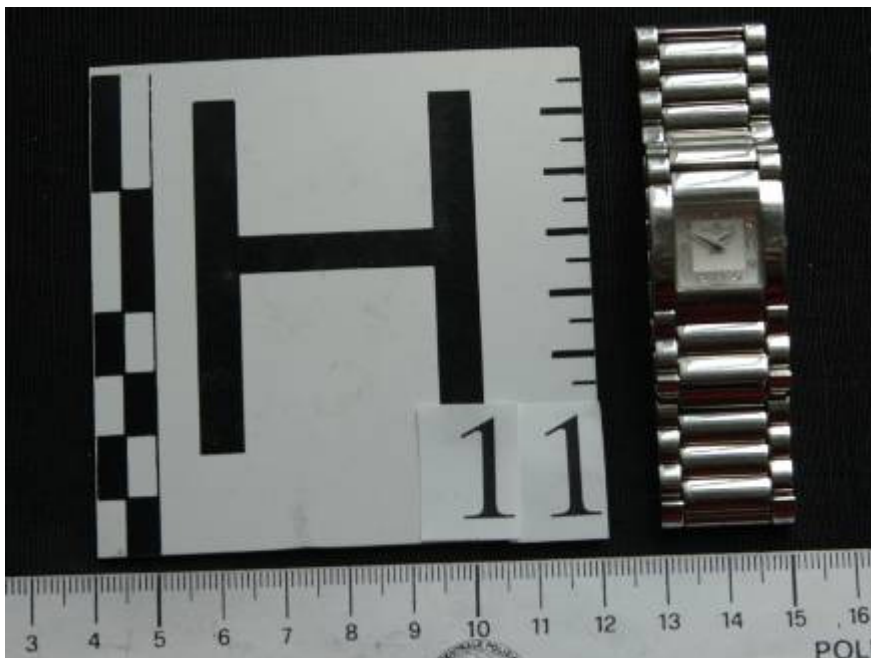
**Matr. 2590078**



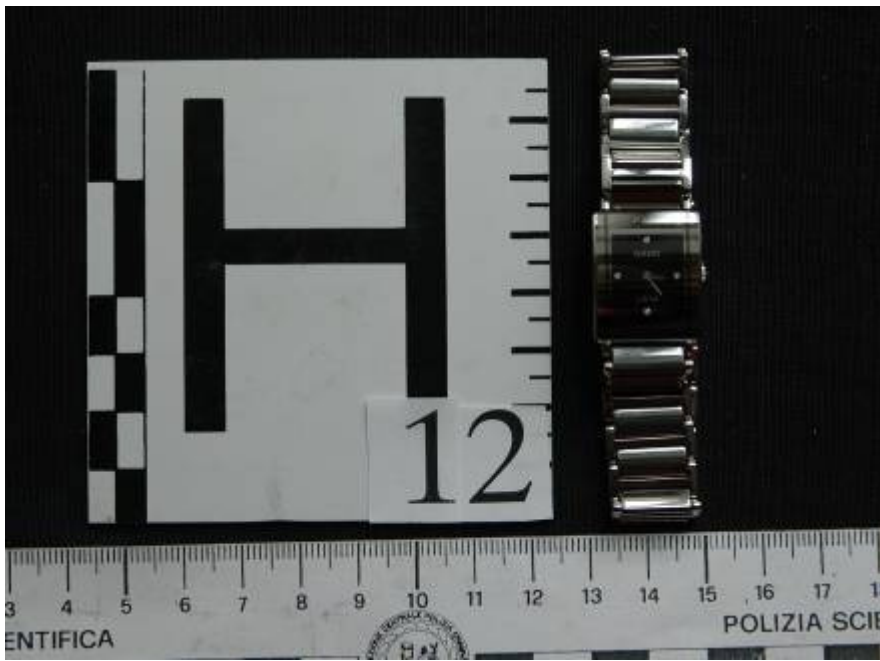
**Matr. K665997**



**Matr. V257858**



**Matr. 5243108**



**Matr. 05507622**



**Matr. 3261889**



**Matr. 1909456- 266.8.44**



**Matr. 9221916**



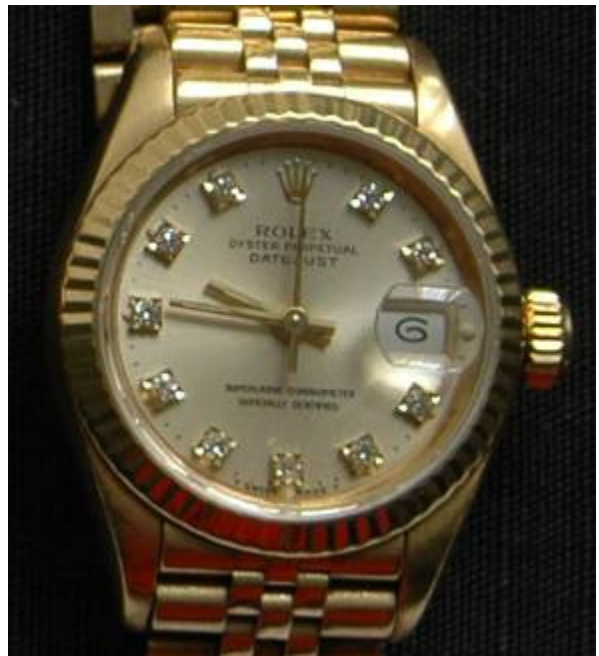
**Matr.7587967**



**Matr. 81950 K13047 2323**



**Matr.6245976**



**Matr.L660297**



**Matr. 391842MG**





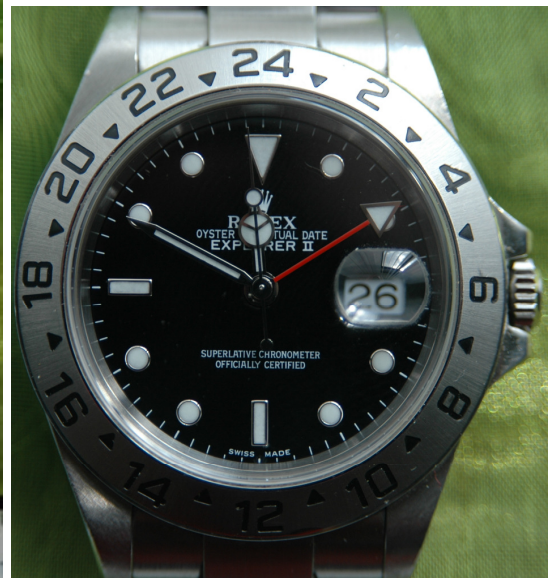
**Matr. NO 6565 E-52125**



**Matr. M 2100622**



**Matr.3239815**



**Matr.D018490**





**Matr. 29501-72**



**Matr. 7246736**



**Matr. BB 970508**



**Matr. 73875**



**Matr. 8806 81.950 B13047**



**Matr. 4615262**



**Matr. 4615652**



**Rado Matr.38520038**



**Matr. E775688**